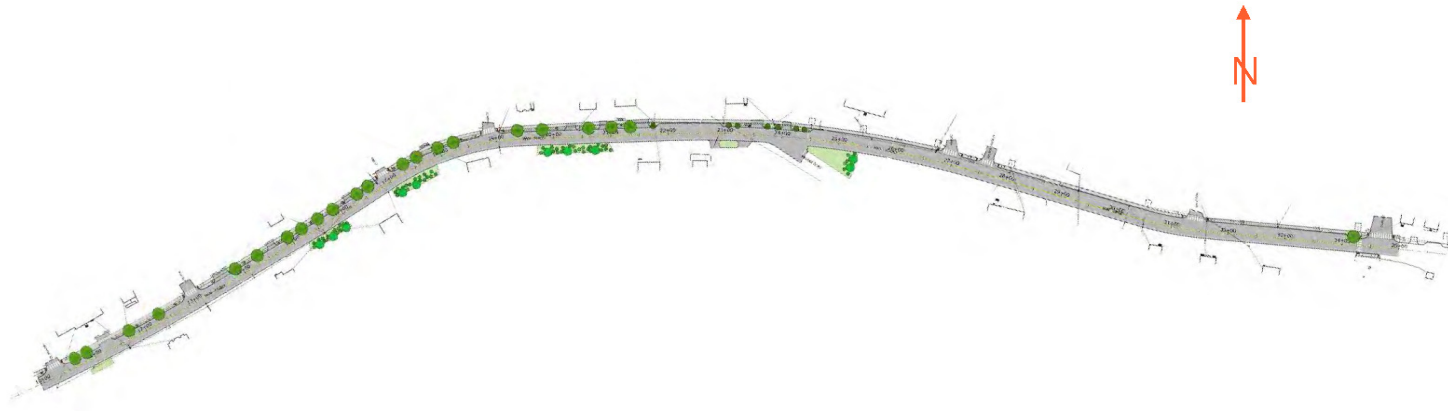


LOWER MAIN STREET STREETScape & RECONSTRUCTION



BRIDGTON, MAINE
OCTOBER, 2018

PROJECT INFORMATION

Milone & MacBroom has been tasked with the reconstruction and streetscape design of Lower Main Street in Bridgton, Maine. The reconstruction will result in improved roadway geometry and stormwater/drainage systems, and improved pedestrian facilities.

Key Facts:

- Extends Eastwardly down Lower Main Street from Mechanic St to Cross St.
- Length: Approx. 2500 ft
- Width: 34' Total (10' lane, 2' shoulder, 5' esplanade (Up to Kansas Rd), 5' sidewalk)
- Full depth asphalt reclamation and construction
- Curbing
 - Granite - Mechanic St to Kansas Rd
 - Bituminous - Kansas Rd to Cross St
- Sidewalks:
 - Concrete - Mechanic St to Kansas Rd
 - Bituminous - Kansas Rd to Cross St
- Utilities: Full storm drainage reconstruction, re-alignment of power poles, relocation of fire hydrants
- Landscaping: FlexiPave hardscape esplanade, Street Trees and Street Lighting (to match Upper Main Street) up to Kansas Rd, Improved Sidewalk layout, removal of invasive Knotweed along southern side of roadway

CURRENT CONDITION

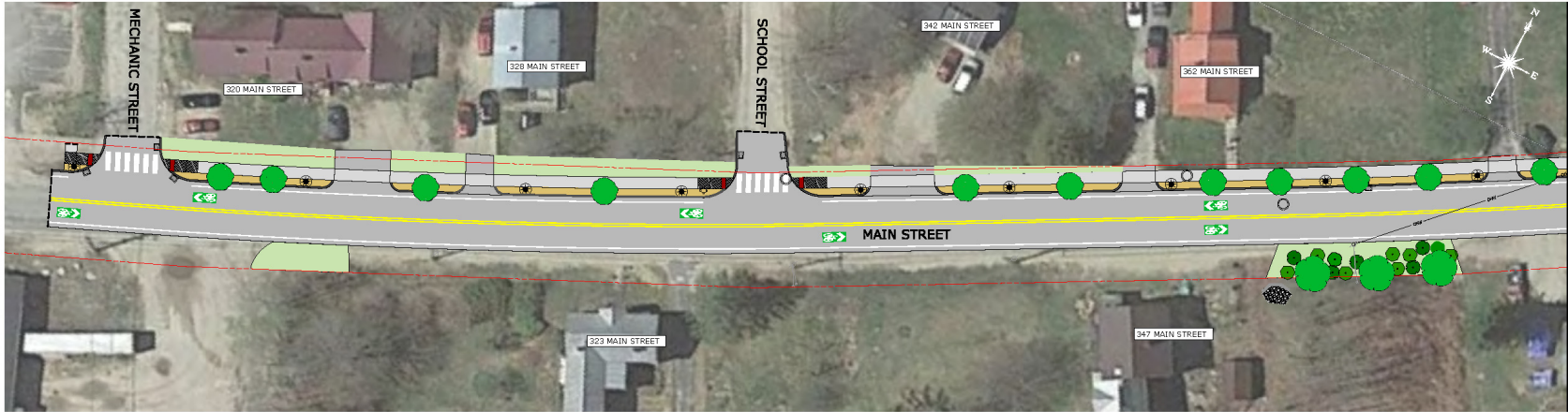


Looking East from intersection with Mechanic St.

CURRENT CONDITION



Looking West from intersection with Cross St



LOWER MAIN STREET PLAN
STG 10+00 - 14+00

CONTINUED BELOW



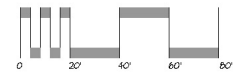
LOWER MAIN STREET PLAN
STG 14+00 - 22+00

CONTINUED ON SHEET NO. 3

CONTINUED ABOVE

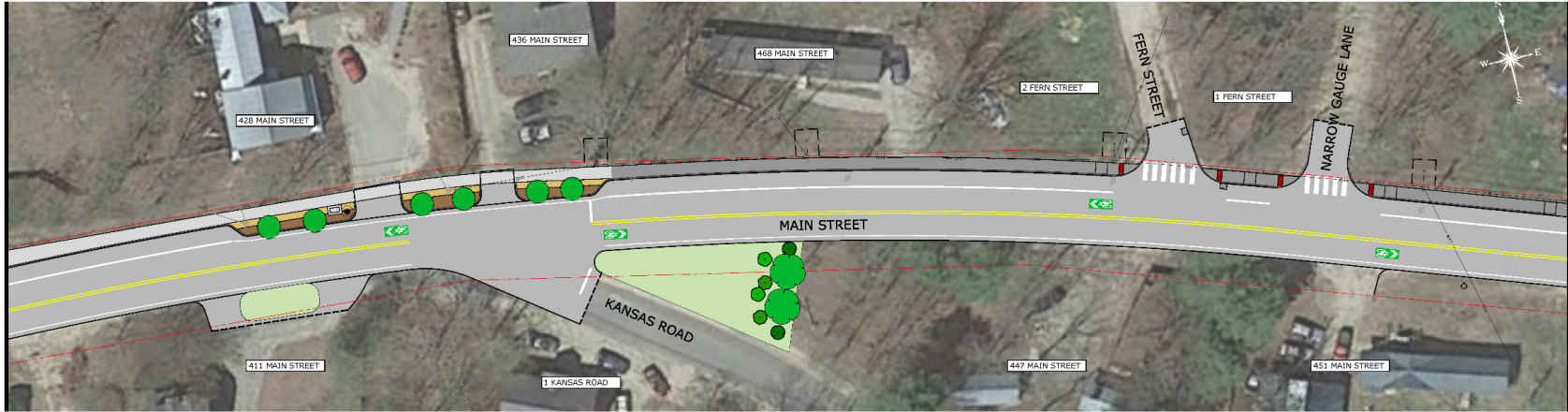
RENDER PLAN - SHEET NO. 2

LOWER MAIN STREET IMPROVEMENTS BRIDGTON, MAINE



Copyright 2011 Milone & Macbroom, Inc.

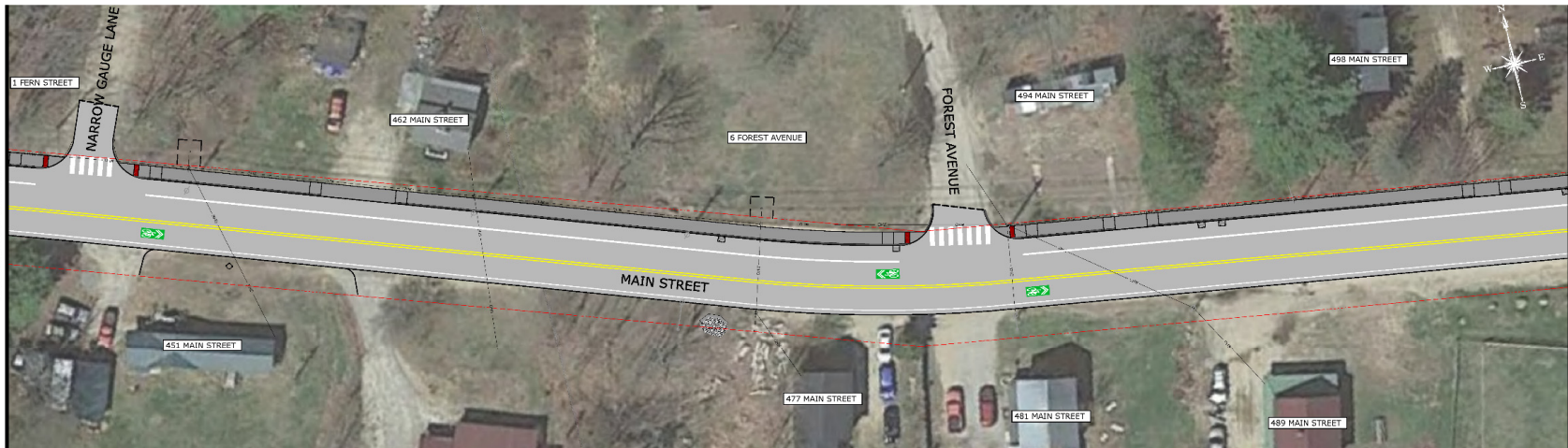
CONTINUED ON SHEET NO. 2



LOWER MAIN STREET PLAN
STA 22+00 - 28+00

CONTINUED BELOW

CONTINUED ABOVE

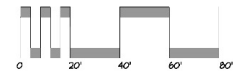


LOWER MAIN STREET PLAN
STA 28+00 - 34+00

CONTINUED ON SHEET NO. 4

RENDER PLAN - SHEET NO. 3

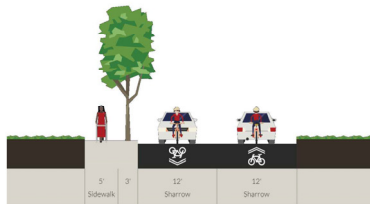
LOWER MAIN STREET IMPROVEMENTS BRIDGTON, MAINE



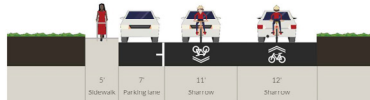
CONTINUED ON SHEET NO. 3



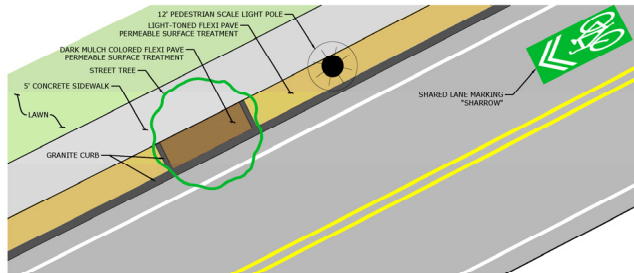
LOWER MAIN STREET PLAN
34+00 - 37+07



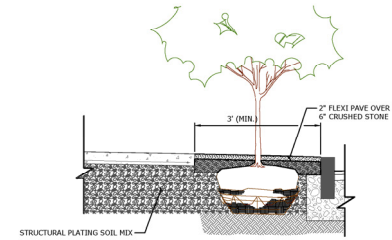
MAIN STREET TYPICAL SECTION
MECHANIC STREET TO KANSAS ROAD



MAIN STREET TYPICAL SECTION
KANSAS ROAD TO CROSS STREET



STREETSCAPE PLAN VIEW
NOT TO SCALE

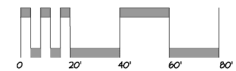


STREETSCAPE SECTION VIEW
NOT TO SCALE

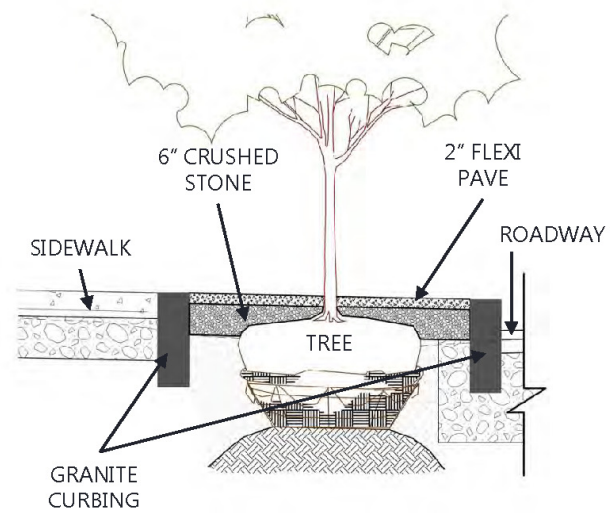
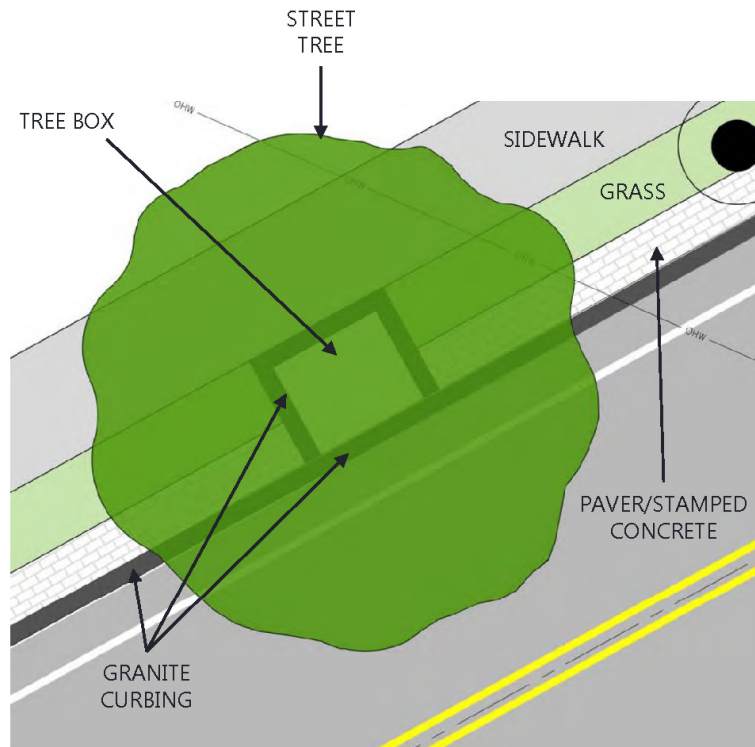
RENDER PLAN - SHEET NO. 4

LOWER MAIN STREET IMPROVEMENTS BRIDGTON, MAINE

MILONE & MACBROOM
30 HIGHLAND STREET, SUITE 200
PORTLAND, ME 04101
(207) 861-5866
WWW.AJEMC.COM



STREETSCAPE



TREE BOX DETAIL

LANDSCAPING



RED TWIG DOGWOOD

ARROWWOOD
VIBURNUM



ILEX VERTICILLATA – "WINTER BERRY"



AMELANCHIER –
"AUTUMN BRILLIANCE"



HORNBEAM



COLUMNAR MAPLE

STREET TREE BASES

City of Portland, ME - Old Port Improvements - Before



City of Portland, ME - Old Port Improvements - After





Lower Main Street Project

Section Development View 1 – Looking East on Lower Main St, West of Kansas Rd



Lower Main Street Project

Section Development View 2 – Looking East on Lower Main St West of Ballfield



LOWER MAIN STREET STREETScape & RECONSTRUCTION

- *Transform into a High Quality Welcoming Corridor*
- *Addition of Streetscape Elements*
 - ✓ *Street Lights*
 - ✓ *Street Trees & Vegetation*
 - ✓ *Benches*
- *Improved Roadway Alignment*
- *Replace Failing Stormwater / Drainage System*
- *Improved Sidewalks & Pedestrian Facilities*
- *Traffic Calming*
- *Defined Parking Areas*