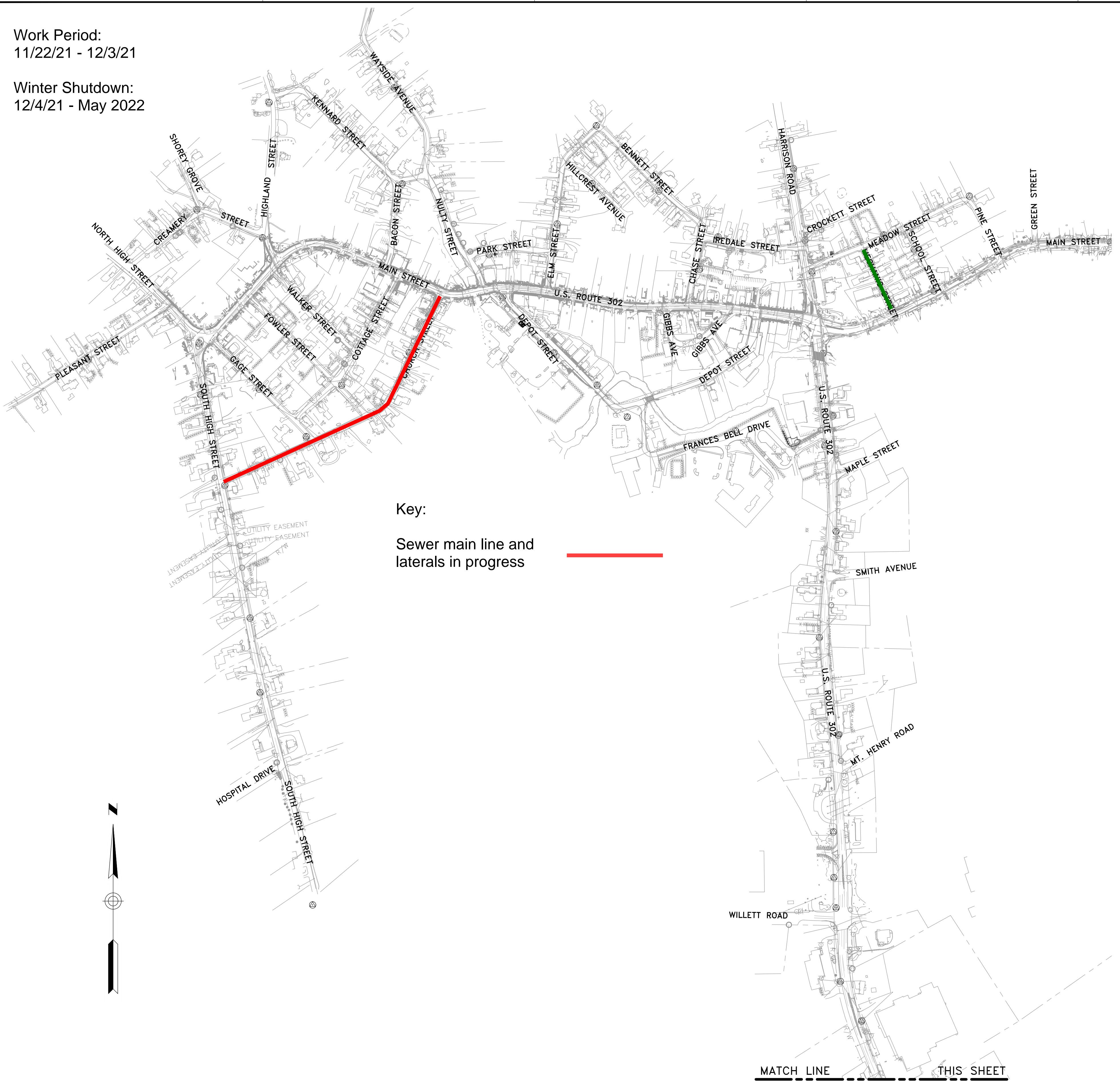


Work Period:  
11/22/21 - 12/3/21  
  
Winter Shutdown:  
12/4/21 - May 2022



Key:  
Sewer main line and laterals in progress

PROJECT KEY  
SCALE: 1"=300'

MATCH LINE THIS SHEET



MATCH LINE THIS SHEET

ISSUE FOR CONSTRUCTION

41 Hutchins Drive  
Portland, Maine 04102  
800.426.4262 | www.woodardcurran.com

WOODARD & CURRAN  
COMMITMENT & INTEGRITY DRIVE RESULTS  
THIS DOCUMENT IS THE PROPERTY OF WOODARD & CURRAN, INC. AND ITS CLIENT. REPRODUCTION OR MODIFICATION WITHOUT WRITTEN PERMISSION IS PROHIBITED.

REV	DESCRIPTION	DATE
0		
1		
2		
3		
4		
5		
6		
7		
8		
9		

DESIGNED BY: JMP  
CHECKED BY: RTP  
DRAWN BY: JDE  
2206801-SCHEDULE MAP.AWG

PROJECT WORK  
OVERVIEW MAP

TOWN OF BRIDGTON  
BRIDGTON, MAINE

WASTEWATER  
COLLECTION SYSTEM UPGRADES

JOB NO: 2206801  
DATE: DECEMBER, 2020  
SCALE: 1"=300'  
SHEET: 3 OF 46

C-002

WoodardCurran.net\shared\Projects\02206801 - Bridgton ME WWTF Sewer Collection\wp\Drawings\Wastewater Collection System\Figures\2206801-SCHEDULE MAP.AWG, Apr 22, 2021 - 3:57pm, JPAGE